



## Cantidad de Obras Registradas: 93

Para Acceder a cada Obra, por favor haga click en la imagen.

[PAISAJE - Obra de Edith J...](#)



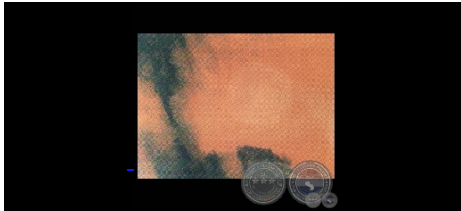
[GRABADO DE EDITH JIMÉNEZ...](#)



[PERAS - Grabado de EDITH...](#)



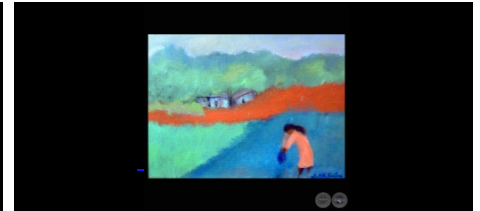
[Sin Título - Obra de Edi...](#)



[CASAS - Óleo de EDITH JI...](#)



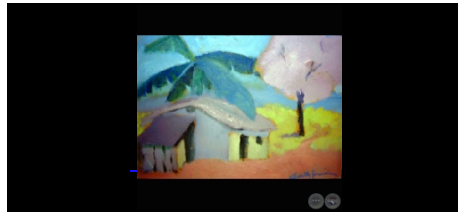
[LAVANDERA - Óleo de EDIT...](#)



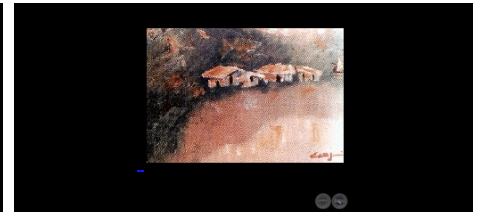
[LAVANDERAS - Obra de Edit...](#)



[Obra de Edith Jiménez...](#)



[Obra de Edith Jiménez...](#)



[Obra de Edith Jiménez...](#)



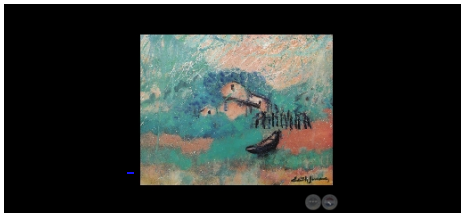
[ABSTRACTO - Grabado Serig...](#)



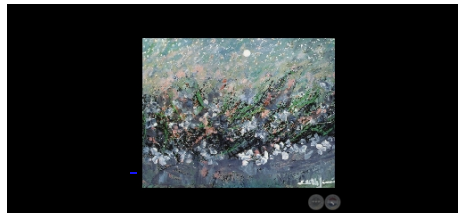
[Obra de Edith Jiménez...](#)



[Obra de Edith Jiménez...](#)



[Obra de Edith Jiménez...](#)



[Obra de Edith Jiménez...](#)



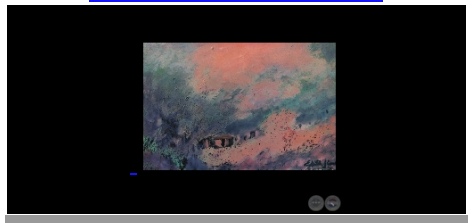
[Obra de Edith Jiménez...](#)



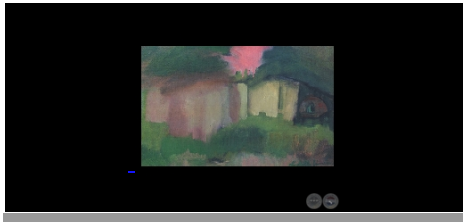
[PAISAJE - Óleo de EDITH...](#)



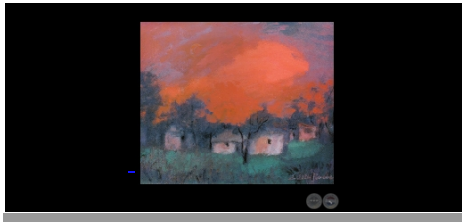
[Obra de Edith Jiménez...](#)



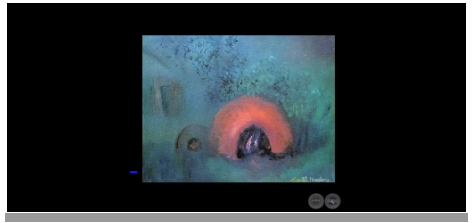
[Obra de Edith Jiménez...](#)



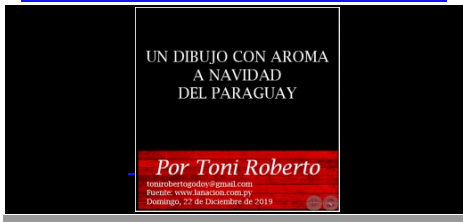
[Obra de Edith Jiménez...](#)



[Obra de Edith Jiménez...](#)



[UN DIBUJO CON AROMA A NAV...](#)



[LOS PINTORES DE ASUNCIÓN...](#)



[ANIVERSARIO DE LA MADRE D...](#)



[EL TALLER DE EDITH, AL AL...](#)



[A Edith Jiménez 100 año...](#)



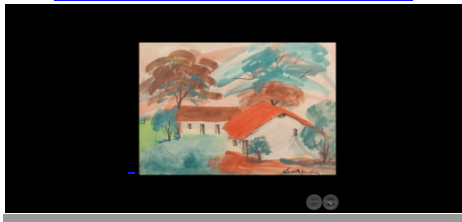
[Cuatro artistas del Parag...](#)



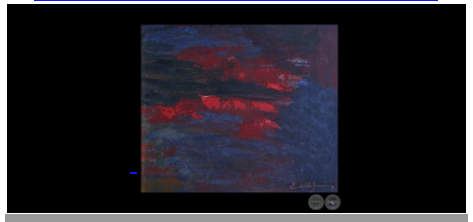
[Y REMBE'Y, los labios del...](#)



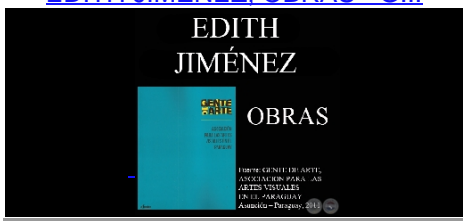
[CASITA ROJA - Óleo de ED...](#)



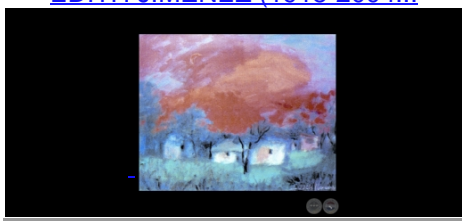
[EDITH JIMENEZ: OBRA GRAFI...](#)



[EDITH JIMÉNEZ, OBRAS - G...](#)



[EDITH JIMÉNEZ \(1918-2004...](#)



[EXPOSICIÓN CCPA, 2008 - ...](#)



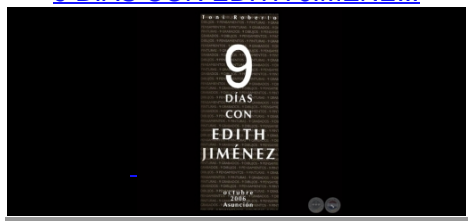
[OBRAS DE EDITH JIMÉNEZ. ...](#)



[EDITH JIMÉNEZ - Obras y ...](#)



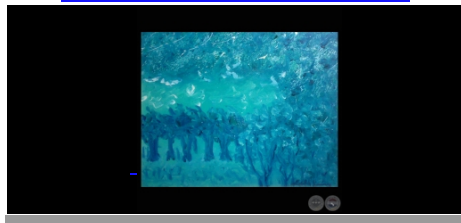
[9 DÍAS CON EDITH JIMÉNE...](#)



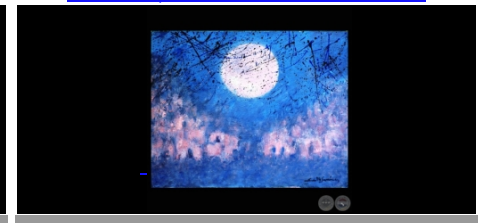
[OPUS 24 - Obra de Edith ...](#)



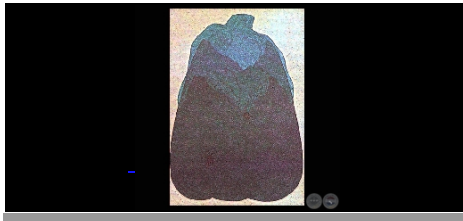
[EN AREGUÁ - Óleo de EDI...](#)



[CASAS. Óleo de EDITH JIM...](#)



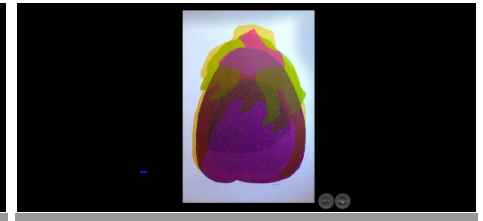
[PUZZLE II - Obra de Edith...](#)



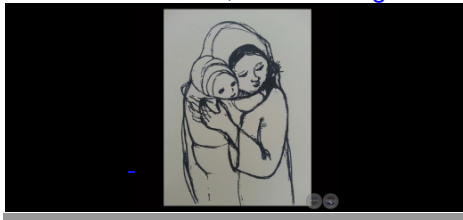
[SIN TÍTULO, c. 1999 - Xi...](#)



[De la serie "PUZZLE" ...](#)



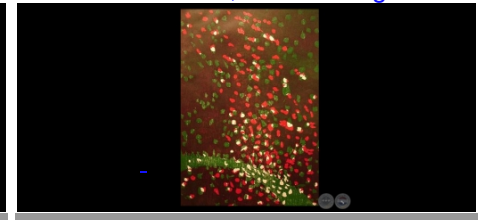
[MATERNIDAD, 1998 - Serigr...](#)



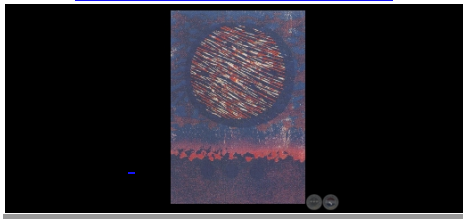
[PINTURA AL ÓLEO de EDITH...](#)



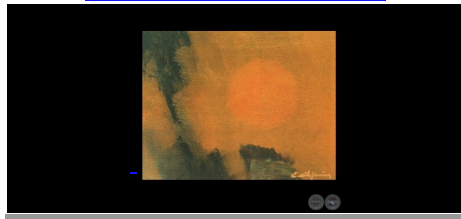
[SIN TÍTULO, 1993 - Xilog...](#)



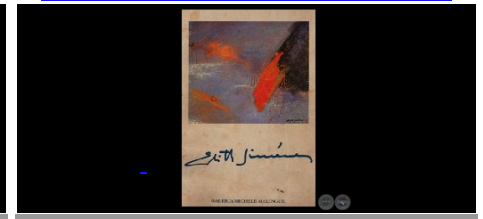
[Obra de Edith Jiménez - ...](#)



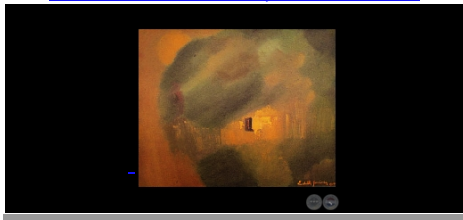
[Sin Título - Obra de Edi...](#)



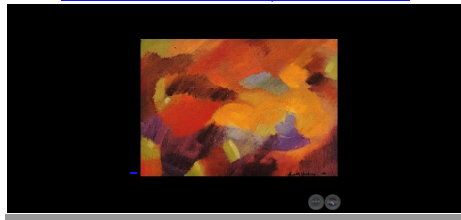
[LA NUEVA PINTURA DE EDITH...](#)



[SERIE PAISAJES, 1990 - Ob...](#)



[SERIE MELODÍA, 1990 - Ó...](#)



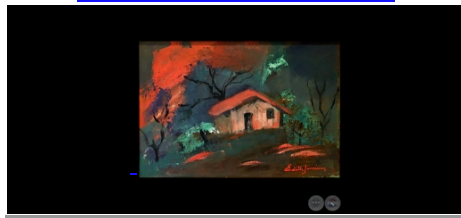
[OPUS 5, 1988 - Linóleo d...](#)



[OPUS 25, 1987 - Impresió...](#)



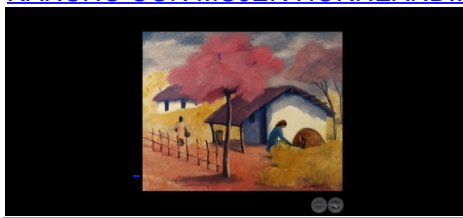
[Obra de Edith Jiménez - ...](#)



[NOCTURNO CON RANCHO, c. 1...](#)



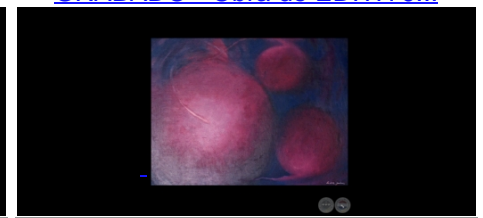
[RANCHO CON MUJER HORNEAND...](#)



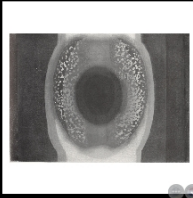
[PRUEBA DE ARTISTA - N° 1...](#)



[GRABADO - Obra de EDITH J...](#)



[SIN TÍTULO 2 / O.T., 197...](#)



[SERIE DE LOS ALQUIMISTAS...](#)



[ALQUIMISTAS, 1975 - EDITH...](#)



[ALQUIMISTAS, 1975 - Xilo...](#)



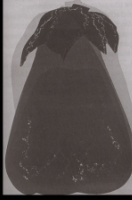
[TORMENTA, 1975 - Obra de ...](#)



[GRABADOS EN COLOR, 1973 - ...](#)



[SERIE PUZZLE, Obra de EDI...](#)



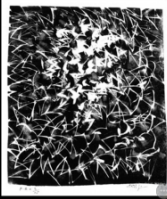
[LA SANGRE EN LA MADERA, 1...](#)



[SIN TÍTULO, 1971 - Linó...](#)



[XILOGRABADO, 1969 - EDITH...](#)



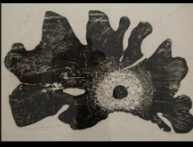
[MBURUCUJÁ - Linóleo de ...](#)



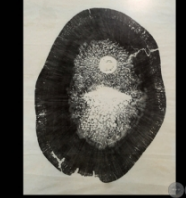
[LOS OJOS DE LA MADERA, 19...](#)



[LA NOCHE EN LA MADERA, 19...](#)



[EL CORAZÓN EN LA MADERA...](#)



[LOS DEDOS EN LA MADERA, 1...](#)



[ABSTRACTO I, 1964 - Pintu...](#)



[SIN TÍTULO I - Pintura d...](#)



[PAISAJE II, 1964 - Óleo ...](#)



[XILOGRABADO, 1964 - Obra ...](#)



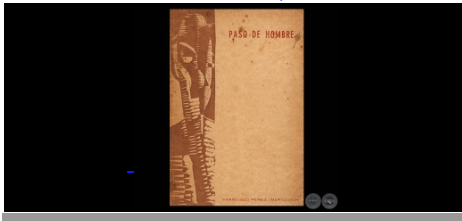
[REVISTA DEL ATENEO PARAGU...](#)



[SIN TÍTULO, 1964 - Xilog...](#)



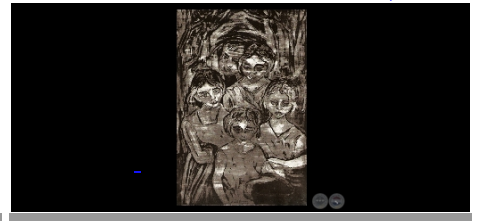
[PASO DE HOMBRE, 1963 - Po...](#)



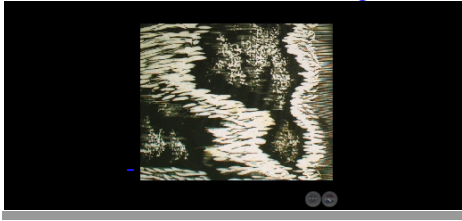
[REVISTA DEL ATENEO PARAGU...](#)



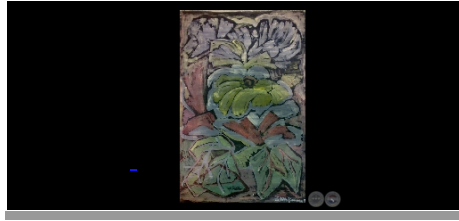
[GIRLS OF THE CHACARITA, 1...](#)



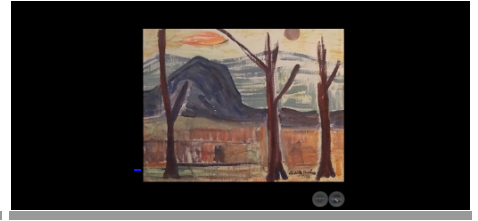
[ABSTRACTO, 1958 - Xilogra...](#)



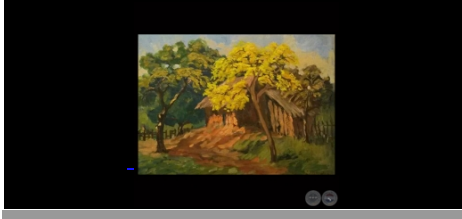
[FLORES, 1957 - Pastel de ...](#)



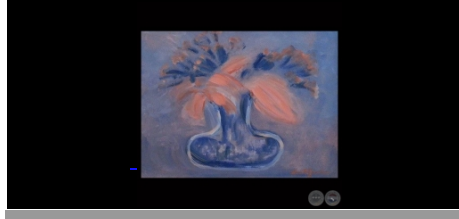
[PAISAJE, 1956 - Óleo sob...](#)



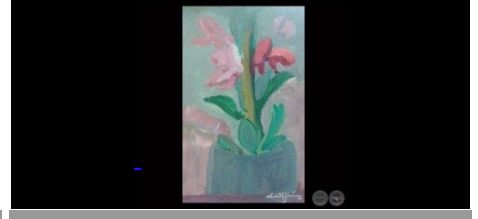
[PAISAJE CAMPESINO, 1952 -...](#)



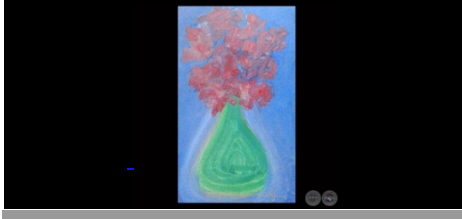
[FLORES - Óleo de EDITH J...](#)



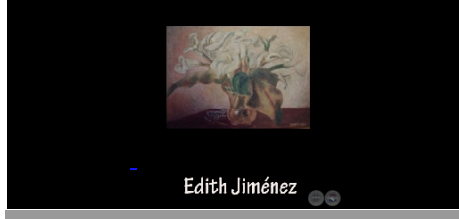
[FLORES - Obra de EDITH JI...](#)



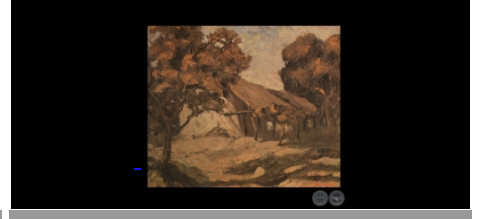
[FLORES - Obra de EDITH JI...](#)



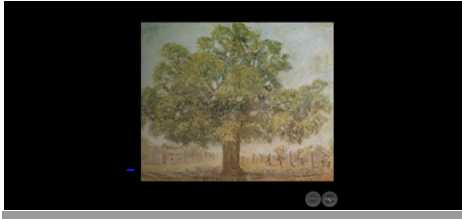
[FLORES - AUTURIUMS, 1944 ...](#)



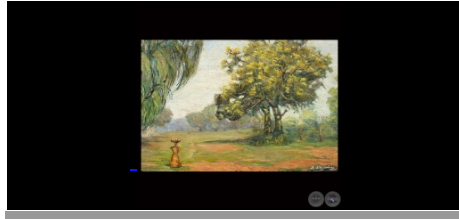
[RANCHO \(Obra de EDITH JIM...](#)



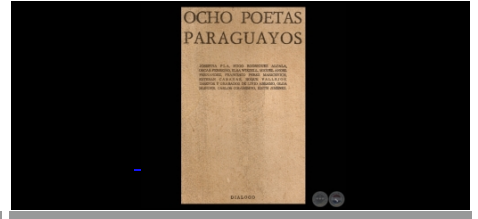
[TATARÉ, AREGUÁ - 1943 -...](#)



[PAISAJE - Óleo de EDITH ...](#)



[OCHO POETAS PARAGUAYOS. E...](#)



[Ingresar al Perfil Completo en PortalGuarani.com](#) ➤

Portal Guarani © 2024  
Contacto: [info@portalguarani.com](mailto:info@portalguarani.com)  
Asunción - Paraguay