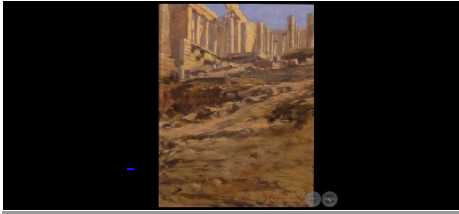


Cantidad de Obras Registradas: 89

Para Acceder a cada Obra, por favor haga click en la imagen.

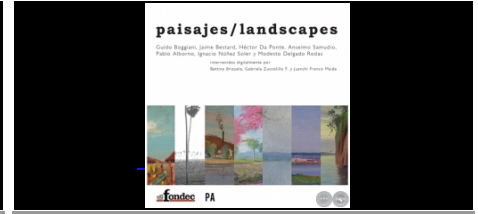
[ACRÓPOLIS. 1895 - Óleo ...](#)



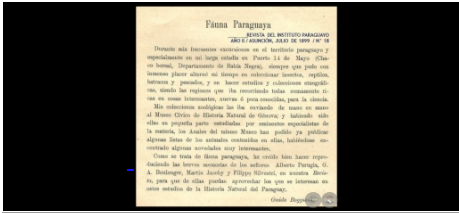
[Dr. Blas Garay - GUIDO BO...](#)



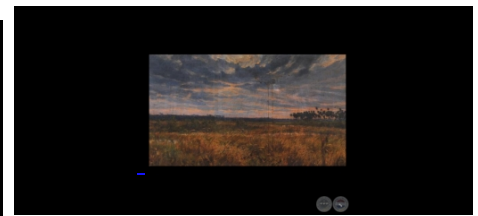
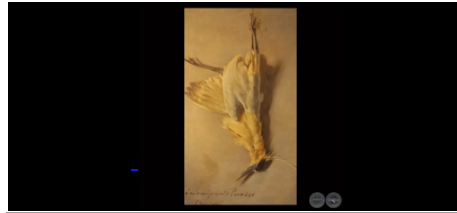
[Paisajes/landscapes - Ani...](#)



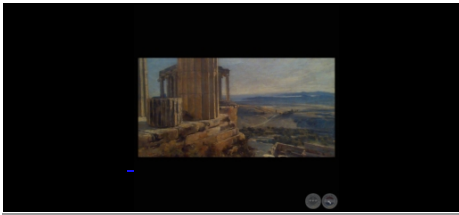
[FAUNA PARAGUAYA - GUIDO B...](#)



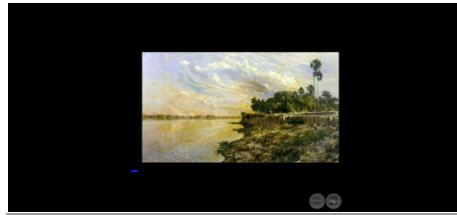
[SIN TÍTULO. 1897 - Óleo...](#)



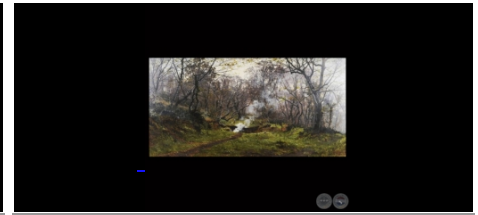
[ATHENE VEDUTA DALL'ACROPO...](#)



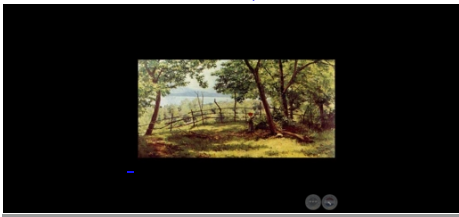
[PAISAJE DEL CHACO PARAGUA...](#)



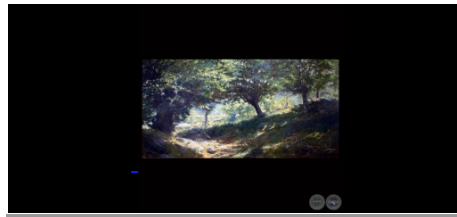
[NEL BOSCO DI ARICCIA. 188...](#)



[LA CORRIENTE, 1883 - Óleo...](#)



[BOSCO DI CASTAGNI SOPRA S...](#)



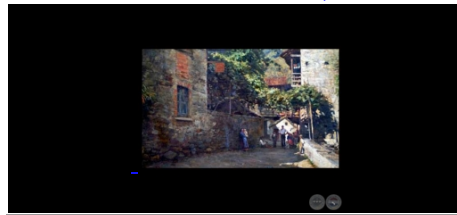
[IL RUSCELLO, 1883 - Óleo...](#)



[LE CAVE DI BAVENO. 1881 -...](#)



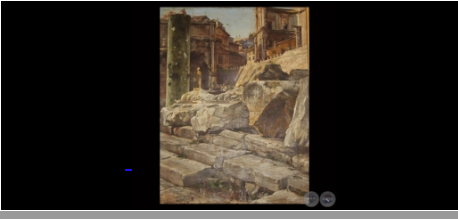
[STRADA A CARCIANO. 1882 -...](#)



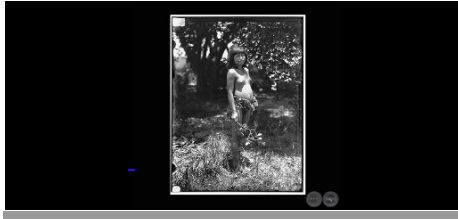
[PAESAGGIO DEL LAGO MAGGIO...](#)



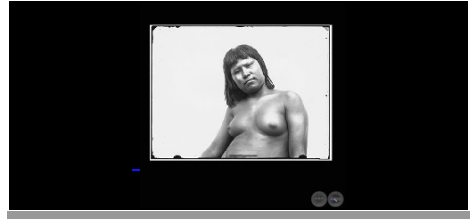
[I PROPILEI - Óleo de GUI...](#)



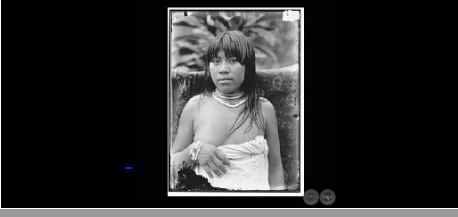
[MUCHACHA DE LA TRIBU CHAM...](#)



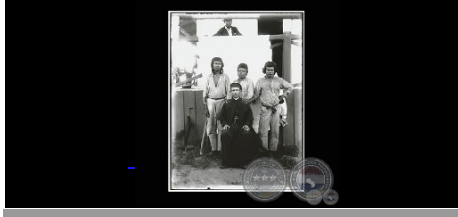
[MUJER DE LA TRIBU CHAMACO...](#)



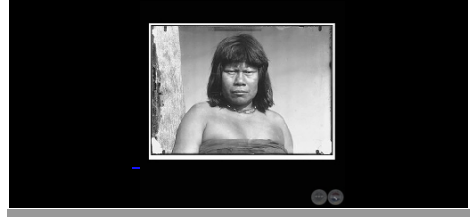
[JUANITA - TRIBU CHAMACOCO...](#)



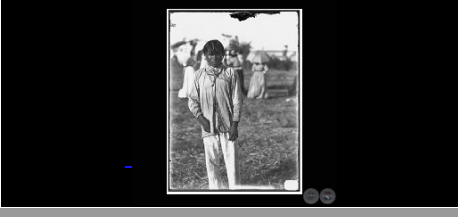
[PADRE BÁZOLA CON JOVENE...](#)



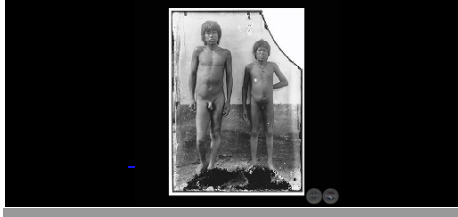
[CLEULÉBITA - TRIBU CHAMA...](#)



[ANGAITÉ VESTIDO...](#)



[ZÍGHIZI Y CUTTIGHÉO...](#)



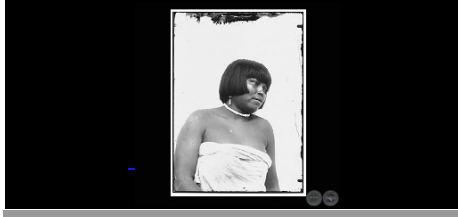
[HOMBRE...](#)



[UILLI...](#)



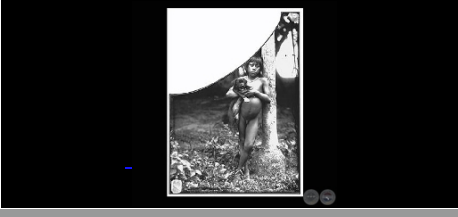
[IÁNA...](#)



[ANCIANA - TRIBU CHAMACOCO...](#)



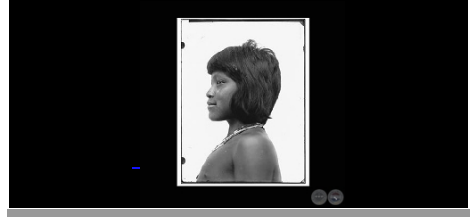
[AGRIPPÍ CON UNA PERRA...](#)



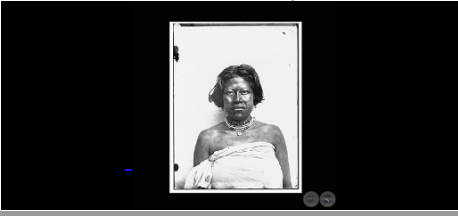
[MUJER CON BEBE - NANÁGÉ...](#)



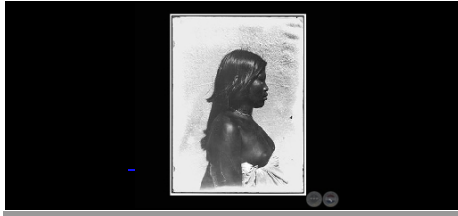
[MUCHACHA DE LA TRIBU CHAM...](#)



[SLAVE CHAMACOCO \(ESPOSA D...](#)



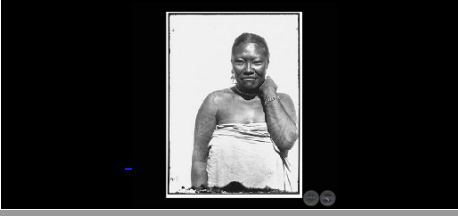
[ESCLAVA DE LA TRIBU CHAMA...](#)



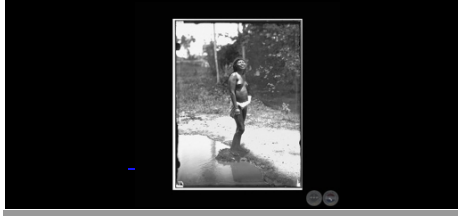
[LA MUJER DE JUANCIÑO - F...](#)



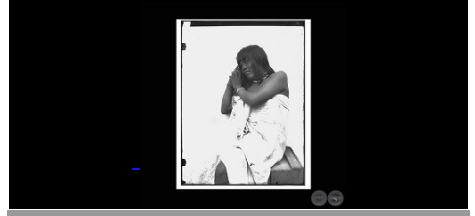
[ESCLAVA PINTADA - TRIBU C...](#)



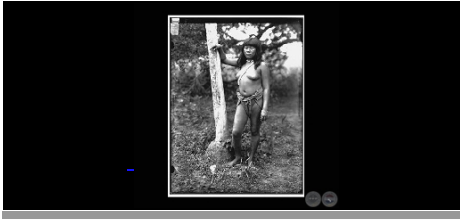
[MUJER DE LA TRIBU CHAMACO...](#)



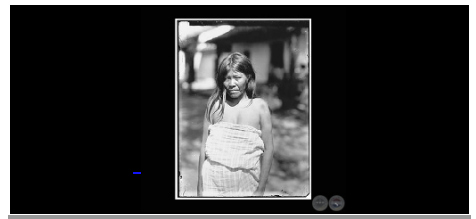
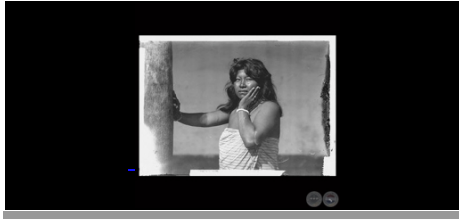
[MUJER DE LA TRIBU CHAMACO...](#)



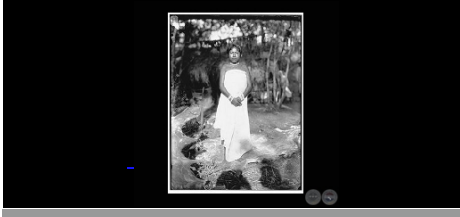
[MUJER DE LA TRIBU CHAMACO...](#)



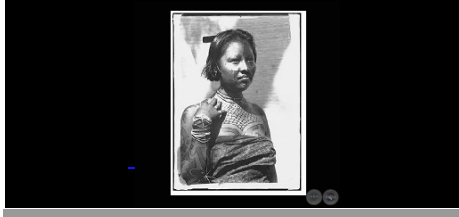
[TÚGÚLE - MUJER TRIBU CH...](#)



[ESCLAVA DE LA TRIBU CHAMA...](#)



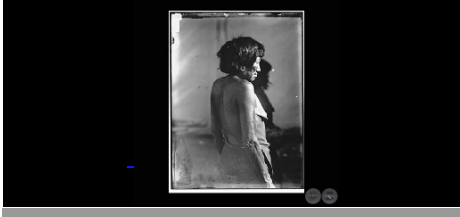
[MUJER JÓVEN PINTADA - Fo...](#)



[HOMBRE DE LA TRIBU LENGUA...](#)



[MUJER DE LA TRIBU LENGUA ...](#)



[MUJERES Y NIÑOS \(REPARTI...](#)



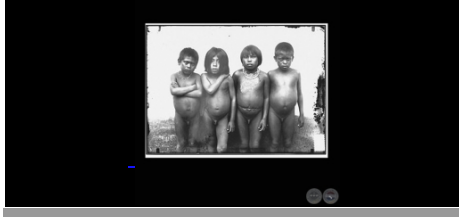
[GRUPO DE MUJERES DE LA TR...](#)



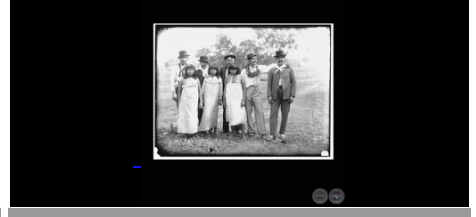
[GRUPO DE MUJERES EN EL PO...](#)



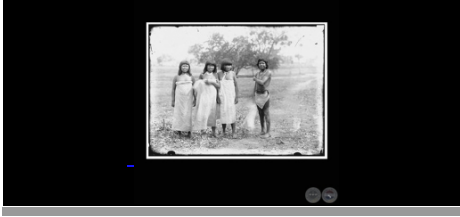
[JÓVENES CHAMACOCOS - Fot...](#)



[TRES MUJERES CON LOS OFIC...](#)



[TOLÓI Y TRES MUJERES - F...](#)



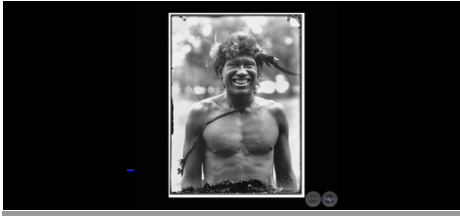
[ESCLAVOS DE LOS CADUVEOS...](#)



[MUCHACHOS EN FILA EN EL P...](#)



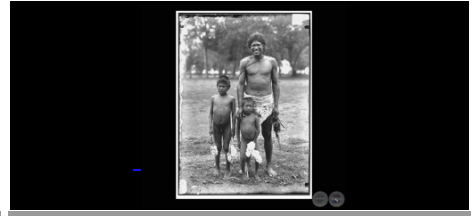
[MÍLLET RIENDO, MEDIA FIG...](#)



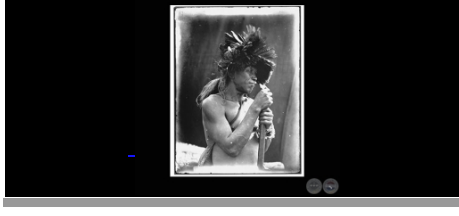
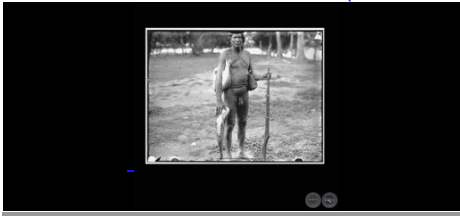
[HOMBRE CHAMACOCO \(MÍLLET...](#)



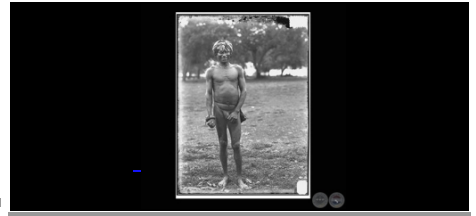
[MÍLLET, CON DOS MUCHACHO...](#)



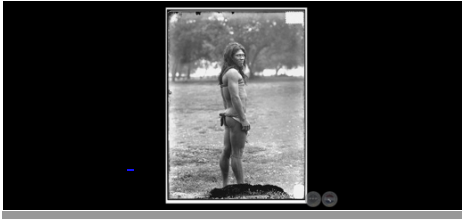
[HOMBRE CON PESCADO \(MILLE...](#)



[IUALÁI CON UNA SERPIENTE...](#)



[IÓATA. SERIO. FIGURA ENT...](#)



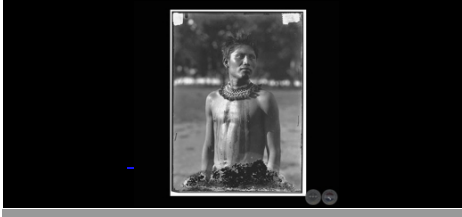
[IÓATA - Fotografía de G...](#)



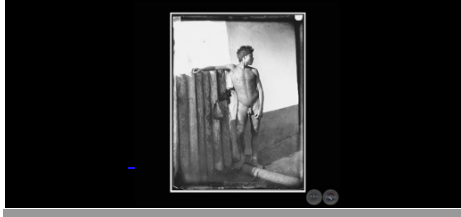
[IÁOTA Y NOZZÁI - Fotogr...](#)



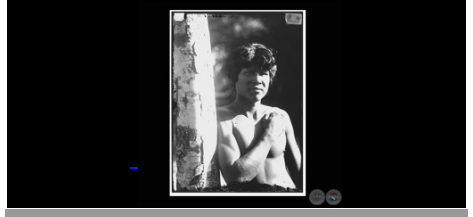
[VICENTE CON EL PECHO SANG...](#)



[HOMBRE DE LA TRIBU CHAMAC...](#)



[NEPOTIO - TRIBU CHAMACOCO...](#)



[MÁGGIOTA - Fotografía d...](#)



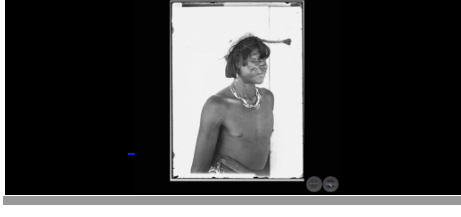
[INDIO DE LA TRIBU SANAPAN...](#)



[ANCIANO DE PELO BLANCO - ...](#)



[ANCIANO TRIBU CHAMACOCO \(...](#)



[CABAÑA DE LA EXPEDICIÓN...](#)



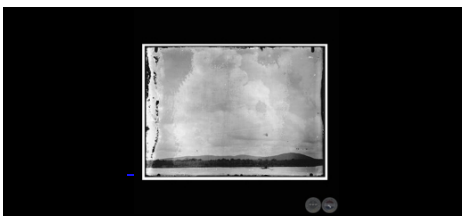
[PALMERAS CARANDÁ CON AVE...](#)



[BOSQUECILLO DE PALMERAS -...](#)



[FORTALEZA OLIMPO Y EL CHA...](#)



[TUMANÁS TOMANDO UN BAÑO...](#)



[RÍO PARAGUAY HACIA EL MO...](#)



[VISTA DESDE LO ALTO DEL M...](#)



[CANOA DE LA TRIBU LENGUA ...](#)



[LIANAS - CHACO PARAGUAYO ...](#)



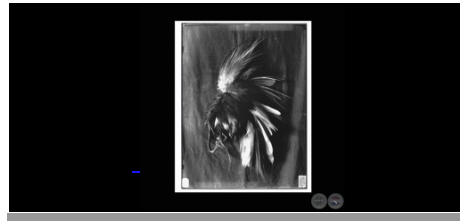
[SANDALIAS DE CUERO DE HOR...](#)



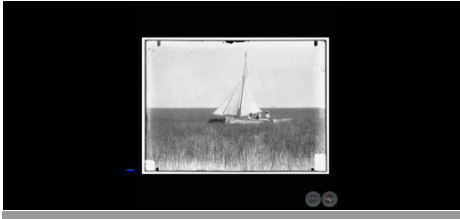
[DIADEMA GRANDE DE PLUMAS ...](#)



[DIADEMA DE PLUMAS DE GARZ...](#)



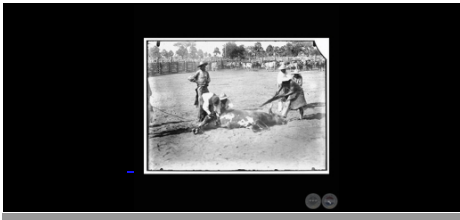
[EL CANGREJO EN LA SABANA ...](#)



[CARRETAS CARGADAS CON YER...](#)



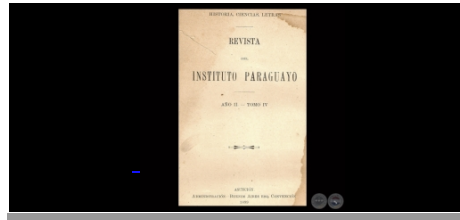
[CASTRACIÓN DE UN TORO - ...](#)



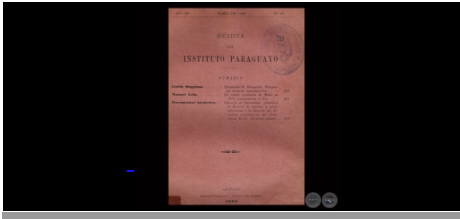
[ASADO A LA ESTACA - Fotog...](#)



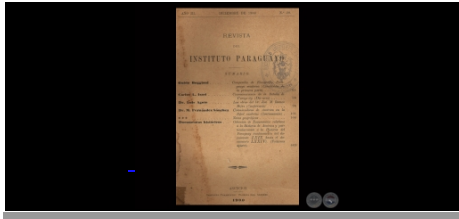
[FAUNA PARAGUAYA - Por GUI...](#)



[COMPENDIO DE ETNOGRAFÍA ...](#)



[COMPENDIO DE ETNOGRAFÍA ...](#)



[Ingresar al Perfil Completo en PortalGuarani.com](#) ➤

Portal Guarani © 2024
Contacto: info@portalguarani.com
Asunción - Paraguay